



TM
DE DYNAMIC
Process Equipment

Dissolved Oxygen Sensor
AquaSense DO

Dissolved Oxygen Sensor - Amperometric

AquaSense DO

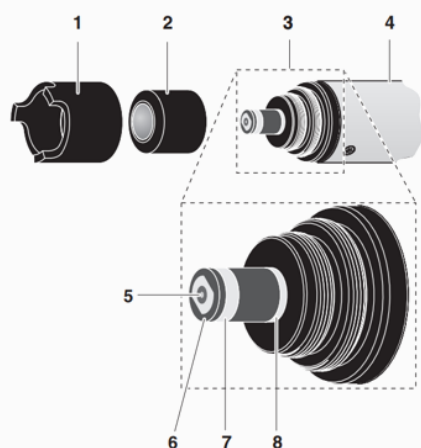


AquaSense DO is an amperometric sensor suitable for pure measuring tasks in wastewater & effluent measurements. This economic model is integrated to provide pre-amplified voltage signal.

Applications

- Industrial process
- Water / Waste water treatment
- Effluent treatment
- Aeration tanks

Features

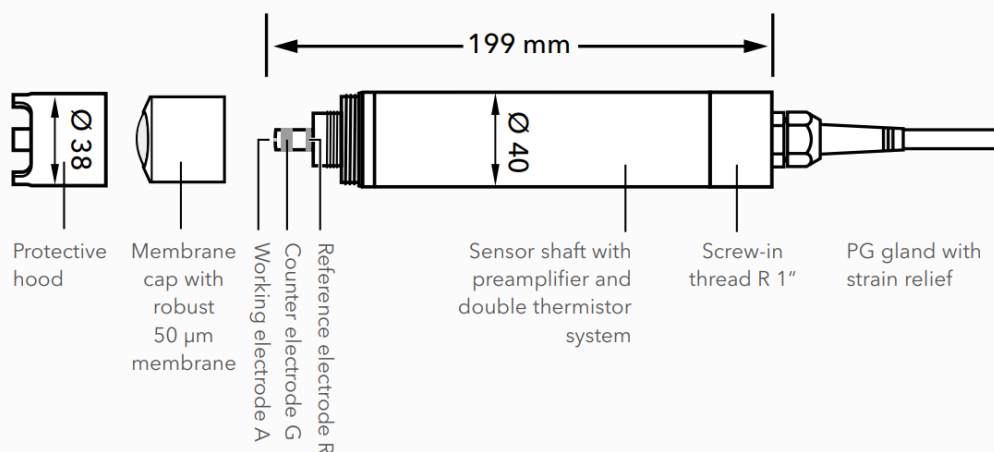


- 1 Protective hood
- 2 WP600 membrane cap
- 3 Electrode unit
- 4 Shaft

- 5 Gold working electrode (cathode)
- 6 Insulator
- 7 Silver counter electrode (anode)
- 8 Reference electrode

Specification:

AquaSense DO : Amperometric Dissolved Oxygen Sensor		
Application		Waste water, Effluent Treatment Processes
Type		Membrane style Amperometric Sensor with 3-Electrode System
Output		Pre-amplified Voltage Signal
O ₂ Range	Concentration	0.0 to 60.0 mg/l
	Saturation	0 to 600%
Temperature Sensor		NTC
Process Range	Temperature	0 to 50 °C
	Pressure	10 Bar
Cathode Electrode		Gold
Anode Electrode		Silver
Response Time		t ₉₀ : 180 s
Min Flow Rate		0.05 m/s
Cable Connector		Integrated 7M Cable
Dimensions	Diameter	40 mm
	Length	199 mm
Certification		CE, cUL, UL



Accessories:

Spare Membrane and Electrolyte Kit



Also check out our range of **Retractable Housings** for Liquid Analytics...



SmartDip 405M

SmartDip 405M is a retractable electrode housing with pneumatically operated drive Unit. This metal body model can be implemented in harsh chemical applications through flan...



SmartDip 220M

SmartDip 220M is a compact retractable electrode housing with manual drive Unit. This metal body model can be implemented in different chemical applications including ferment...



SmartDip 405P

SmartDip 405P is a retractable electrode housing with pneumatically operated drive Unit. This plastic body model can be implemented in harsh chemical applications through flan...



SmartDip 250M

SmartDip 250M is a manually operated Retractable electrode housing with long immersion lengths and ball valve for isolation. It can fit 120mm long Sensor.



SmartDip 420M

SmartDip 420M is a compact retractable electrode housing with pneumatically operated drive Unit. This metal body model can be implemented in different chemical applicatio...



SmartDip 240M

SmartDip 240M is a compact retractable electrode housing. This version can fit 120mm long sensor. It comes with 1" NPT, Triclover connection.



SmartDip 450M

SmartDip 450M is a pneumatically operated retractable electrode housing with long immersion length and isolation ball valve. This unique model can fit 120mm long sensor.